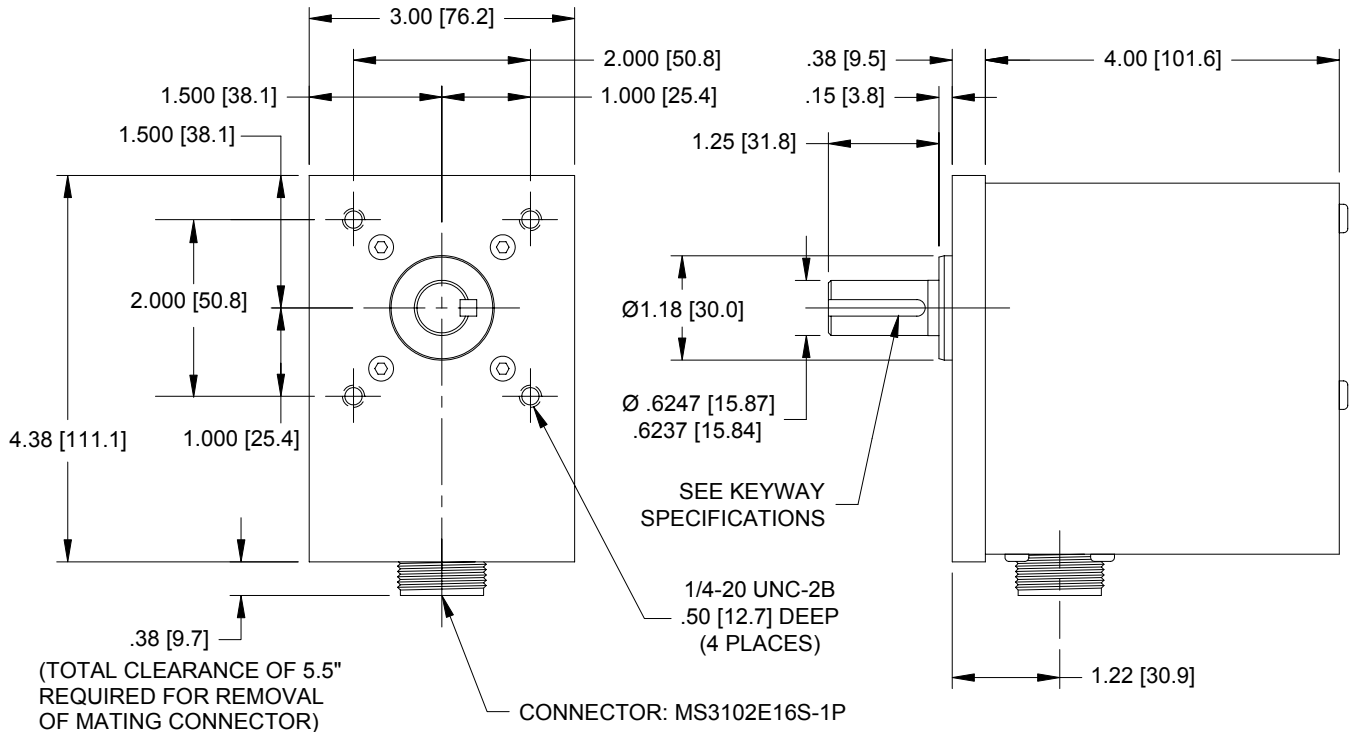


## SPECIFICATION / DATA SHEET (Reliance Series)

[ ] = DIMENSIONS IN MILLIMETERS



### MECHANICAL SPECIFICATIONS

STARTING TORQUE: 8 oz. in. @ 25° C  
MOMENT OF INERTIA: 20 oz-in-sec<sup>2</sup>  
MAX. SHAFT LOADING: Radial: 400 lb.  
Axial: 200 lb.

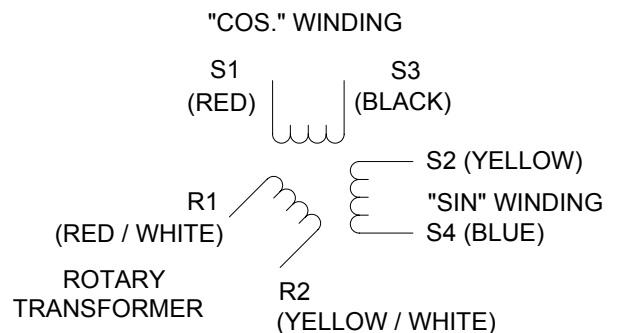
### ENVIRONMENTAL SPECIFICATIONS

OPERATING TEMP: -20°C to 125°C  
SHOCK: 50 G's for 11 mSec  
VIBRATION: 5 to 2000 Hz @ 20 G's  
NEMA RATING: NEMA 4/13  
WHEN PROPERLY INSTALLED

### KEY WAY SPECIFICATIONS

KEYWAY:  
.1885 / .1895 [4.79 / 4.81] WIDE  
X .106 / .108 [2.69 / 2.74] DEEP  
KEY:  
.187 / .188 [4.75 / 4.78]  
SQUARE X 1.0 [25.4]

### RESOLVER SCHEMATIC



### RESOLVER TO CONNECTOR WIRING DIAGRAM

