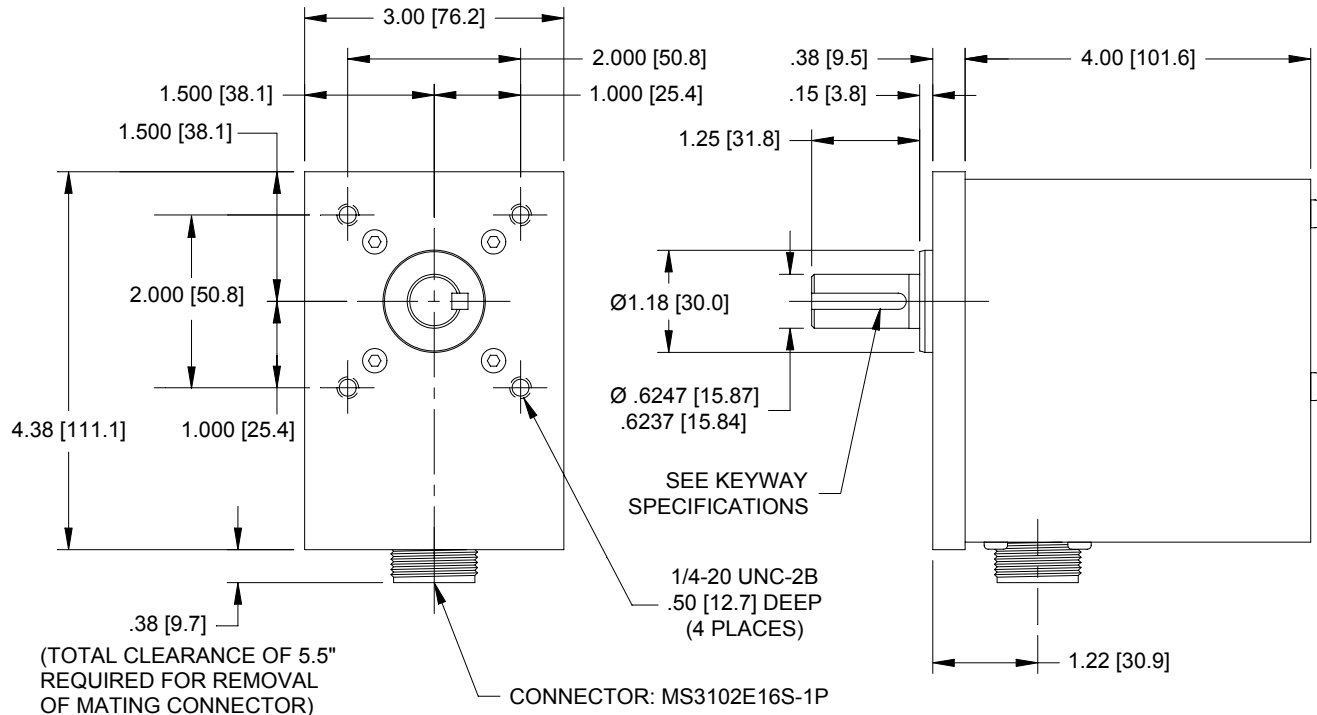


## SPECIFICATION / DATA SHEET (Namco Series)

[ ] = DIMENSIONS IN MILLIMETERS



### MECHANICAL SPECIFICATIONS

STARTING TORQUE: 8 oz. in. @ 25° C  
 MOMENT OF INERTIA: 20 oz-in-sec<sup>2</sup>  
 MAX. SHAFT LOADING: Radial: 400 lb.  
 Axial: 200 lb.

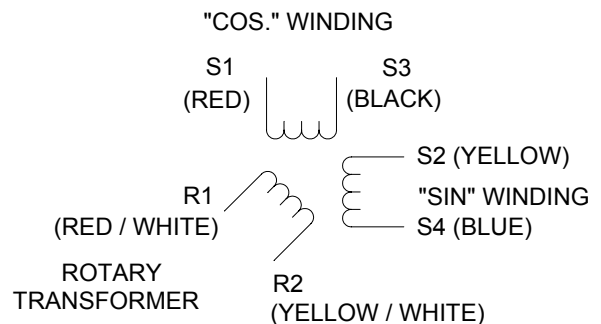
### ENVIRONMENTAL SPECIFICATIONS

OPERATING TEMP: -20°C to 125°C  
 SHOCK: 50 G's for 11 mSec  
 VIBRATION: 5 to 2000 Hz @ 20 G's  
 NEMA RATING: NEMA 4/13  
 WHEN PROPERLY INSTALLED

### KEY WAY SPECIFICATIONS

KEYWAY:  
 .1885 / .1895 [4.79 / 4.81] WIDE  
 X .106 / .108 [2.69 / 2.74] DEEP  
 KEY:  
 .187 / .188 [4.75 / 4.78]  
 SQUARE X 1.0 [25.4]

### RESOLVER SCHEMATIC



### RESOLVER TO CONNECTOR WIRING DIAGRAM

